

Welcome to Smartproxy!

We know you can't wait to start using the best proxies in town! That's why this guide will have you up and running instantly. Find everything you need to get started: hold on tight and scroll down!

- How proxies work
- Smartproxy dashboard overview
- Authentication methods
- Endpoints
- Choosing endpoints
- Sending APIs requests
- Monthly subscriptions and Pay As You Go
- Free tools
- Help & Documentation

Your package includes:

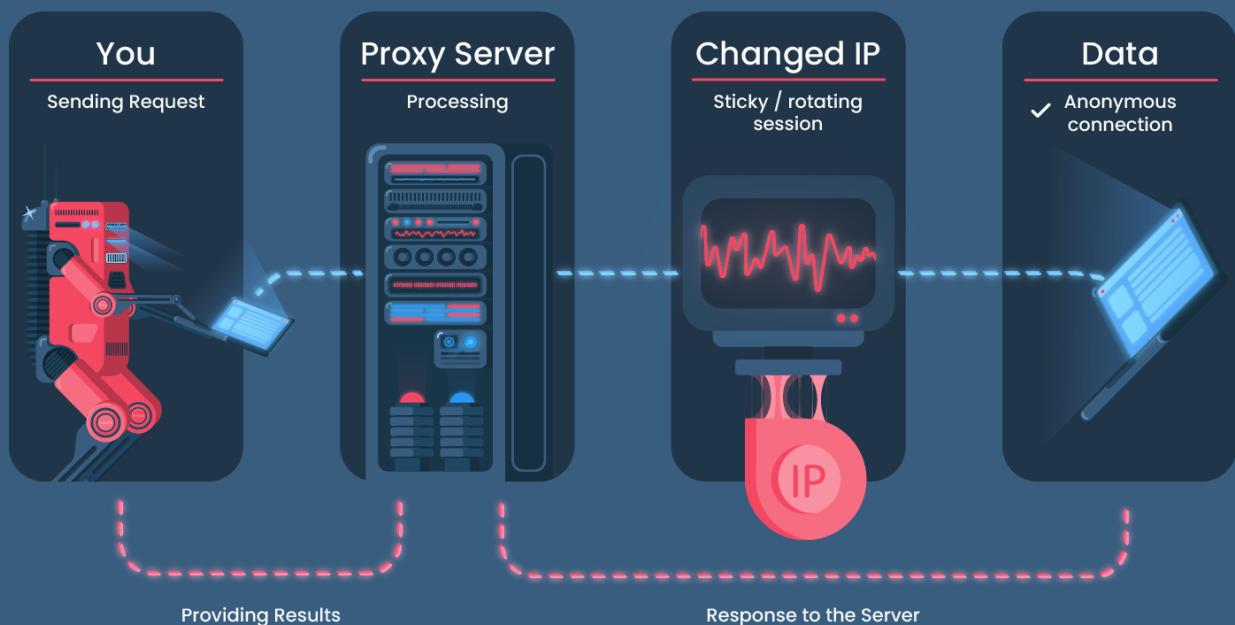
Awarded performance

Unlimited connections

HTTPs + IPV4

24/7 dopest customer support

How proxies work



Smartproxy dashboard overview

Pricing

Buy, upgrade, renew, or downgrade your plan.

Traffic usage

See your traffic statistics and subscription details.

Requests usage

See your requests' statistics and subscription details.

Collection management

Manage and create your No-Code Scraper collections.

Proxy setup

Set up a type of access to the proxy service, configure location, and proxy settings.

Apps

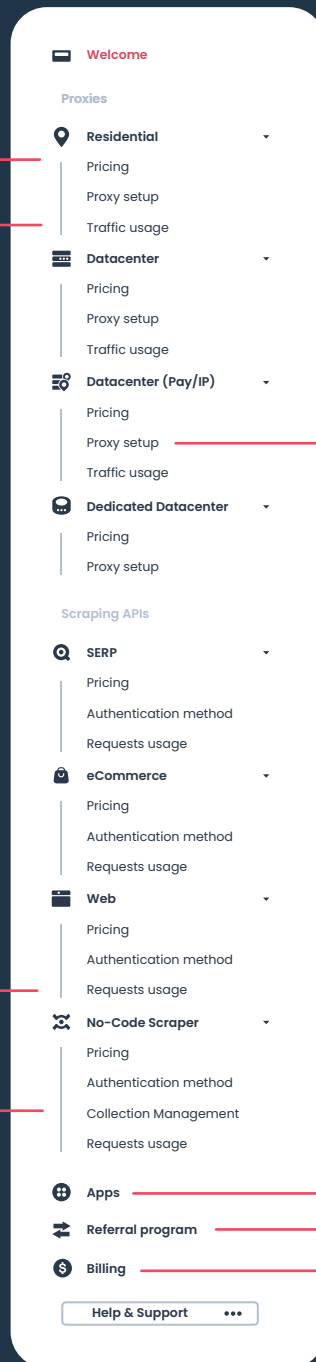
Up your proxy game with X Browser, Chrome and Firefox add-ons, or generate proxy lists.

Referral program

Invite your besties to the Smartproxy fam and get 10% of the residential plan size your friend purchased! The referral program will launch automatically after 32 days of your subscription's activation.

Billing

See your active subscriptions and payment history.



Residential: Starter	● Active	0 / 20 GB
Datacenter: Smart	● Active	0 / 200 GB
Search Engine: Lite	● Active	0 / 35K req.
Dedicated Datacenter: —	○ Inactive	0 IPs

Buy traffic +

Buy traffic

Purchase more GB traffic for residential and datacenter plans, or requests for the SERP, Web, eCommerce Scraping APIs, and No-Code Scraper here.

Authentication methods

Authenticate via Username:Password

If you choose this authentication method, you'll be able to create a list of trusted IP addresses and won't need to use user:pass authentication. Whitelisting works with residential and shared datacenter proxies (with Pay per IP pricing option) only. The number of IP addresses you can add depends on your plan.

Authentication

Authenticate via
Username:Password

Username Password + Create

Search

Total users: 1/3 Buy more +

Status / Username / Password	Traffic used so far / Traffic limit	Actions
● Username : *****	0.00 GB	Delete ✕

Proxy user

With one proxy user, you can connect to as many locations and concurrent sessions as you want. This means that you can access the whole proxy pool!

Proxy user creation


The username must contain letters (you can use upper and lower cases) and numbers only without any spaces in between. It must be from 6 to 64 characters long. Please do not use '@' or ':' in the password. To change any proxy authentication credential, click 'Edit'.

Total users

is the number of proxy users you can create and how many of them are active. The number depends on your plan and you can buy additional users at any time. Having multiple proxy users (sub-users) is useful if you want to track and limit traffic usage of different tasks/projects. You can also add a GB limit to control the sub-user's traffic use.

Authenticate via whitelisted IP address

If you choose this authentication method, you will be able to create a list of trusted IP addresses and won't need to use user:pass authentication. Whitelisting works with residential proxies only. The number of IP addresses you can add depends on your plan.


Authenticate via
Location's IP address

Add manually: Add

Add current IP address: Add

Total IP Addresses: 0 / 3 Traffic used: 0 GB

IP Address	Name	Actions
The list is empty		

Endpoints

Endpoint generator

1. Authentication method
Managed in the authentication section

☐
Username
Password

☐
Any location's IP address from your list

2. Proxy location
Server domain

Random (gate.smartproxy.io)

5. Generate proxy list

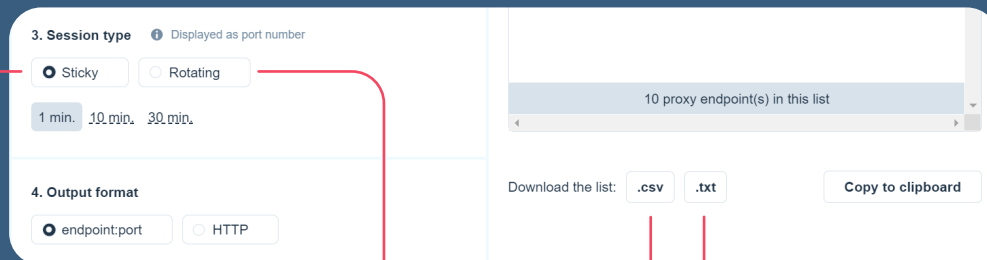
Maximum number of endpoints: 10

```
gate.smartproxy.io:10000:<username-sessionduration-1>:<password>
gate.smartproxy.io:10001:<username-sessionduration-1>:<password>
gate.smartproxy.io:10002:<username-sessionduration-1>:<password>
gate.smartproxy.io:10003:<username-sessionduration-1>:<password>
gate.smartproxy.io:10004:<username-sessionduration-1>:<password>
gate.smartproxy.io:10005:<username-sessionduration-1>:<password>
gate.smartproxy.io:10006:<username-sessionduration-1>:<password>
gate.smartproxy.io:10007:<username-sessionduration-1>:<password>
gate.smartproxy.io:10008:<username-sessionduration-1>:<password>
gate.smartproxy.io:10009:<username-sessionduration-1>:<password>
```

Proxy location

Use the proxy address (endpoint) to connect to the specific location's proxy pool. With residential plans, you can filter location by specifying country, US state, or city from over 195 locations. With the datacenter and dedicated datacenter plans, we offer country-targeting worldwide.





The screenshot shows the SmartProxy configuration interface. On the left, under '3. Session type', there are two radio buttons: 'Sticky' (selected) and 'Rotating'. Below them are three buttons for rotation intervals: '1 min.', '10 min.', and '30 min.'. Under '4. Output format', there are two radio buttons: 'endpoint:port' (selected) and 'HTTP'. On the right, there is a text input field containing '10 proxy endpoint(s) in this list'. Below this, there are two buttons for downloading the list: '.csv' and '.txt'. To the right of these is a 'Copy to clipboard' button. Red lines connect the 'Rotating' button to the 'Session type: rotating session' section and the '.csv' and '.txt' buttons to the 'Session type: sticky session' section.

Session type: rotating session

The IPs will change automatically with each new request from the proxy pool you specified. You don't need to have an IP list anymore or rotate proxies manually, as the port will cover it all behind the scenes.

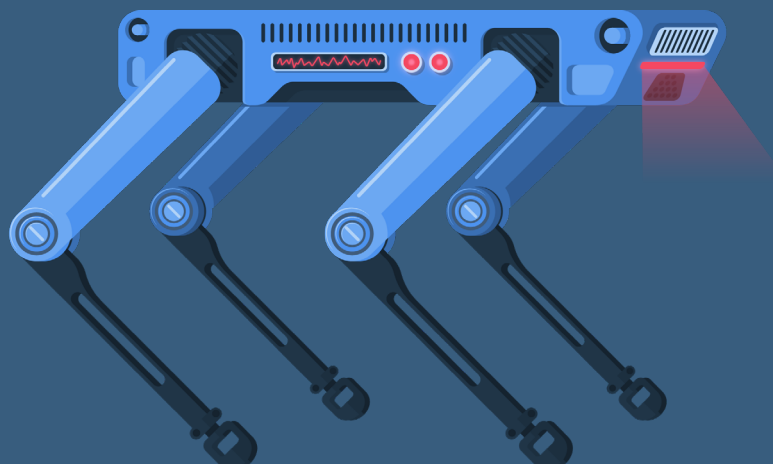
When you're using the rotating session, the port will be identified with one number. For example, a rotating proxy in a random location will use the 7000 and the USA one - 10000. The exit IPs will be rotating automatically.

Session type: sticky session

If you choose this session, proxies will rotate slower. This means that you can keep the same IP for a longer period of time: residential proxies from 1 to 10 and even 30 minutes. In case of datacenter proxies, up to 30 minutes.

If you use a sticky session, you can use any port(s) in the ports range to connect to the proxy server (endpoint). By changing the port number, the exit IP will change too. You can also download your filtered list of domain:ports by clicking on '.csv' or '.txt' format next to the 'Download the list via'.

Voilà! Now you have everything: the authentication, the proxy address, and the port (or port range) to integrate our proxies with any software/bot/scrapper of your choice!



Choosing endpoints

A. For rotating session

You'll get a new IP with every request.

From a random location

gate.smartproxy.com:7000 endpoint will rotate your IP from a random location with every new request.

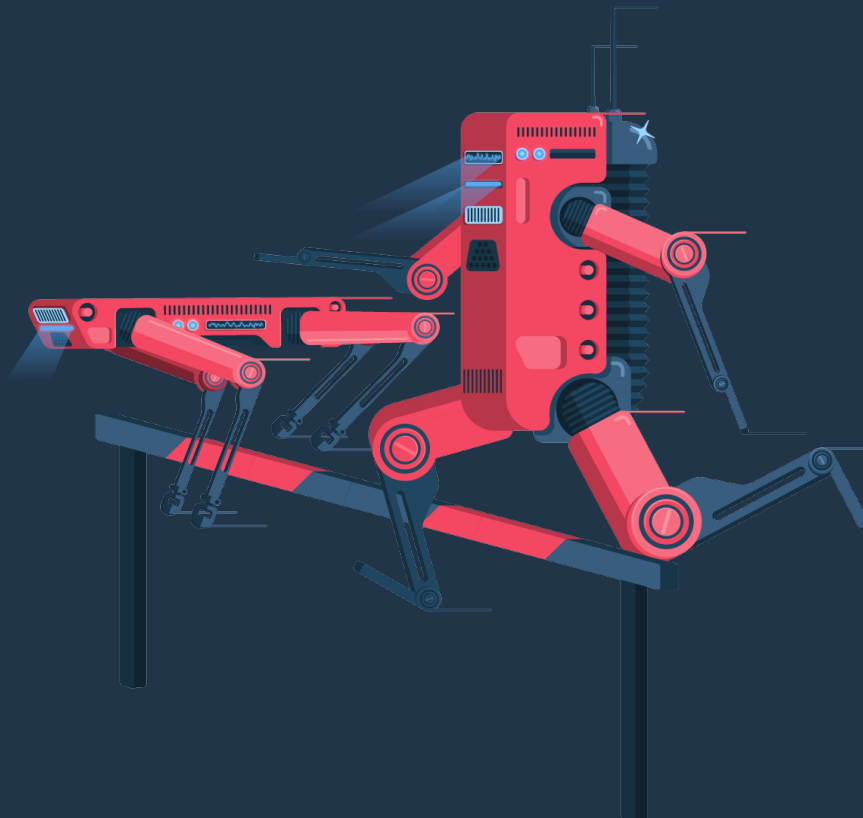
```
curl -U user:pass -x gate.smartproxy.com: 7000 https://ipinfo.io
```

From a specific location

To rotate your IP with each request to a new specific location you need to choose a specific domain:port combination.

This means, you need to use one city/country specific proxy endpoint. For example, us.smartproxy.com:10000 will give random US proxy IP with every query.

```
curl -U user:pass -x us.smartproxy.com: 10000 https://ipinfo.io
```



B. For sticky session

You'll have the same IP for up to 30 minutes.

From a random location

If you need to establish sticky sessions from a random location, use a single backconnect entry node with sticky session parameters.

```
curl -U user-<user>:<pass> -x gate.smartproxy.com: 10000 - 49999 https://ipinfo.io
```

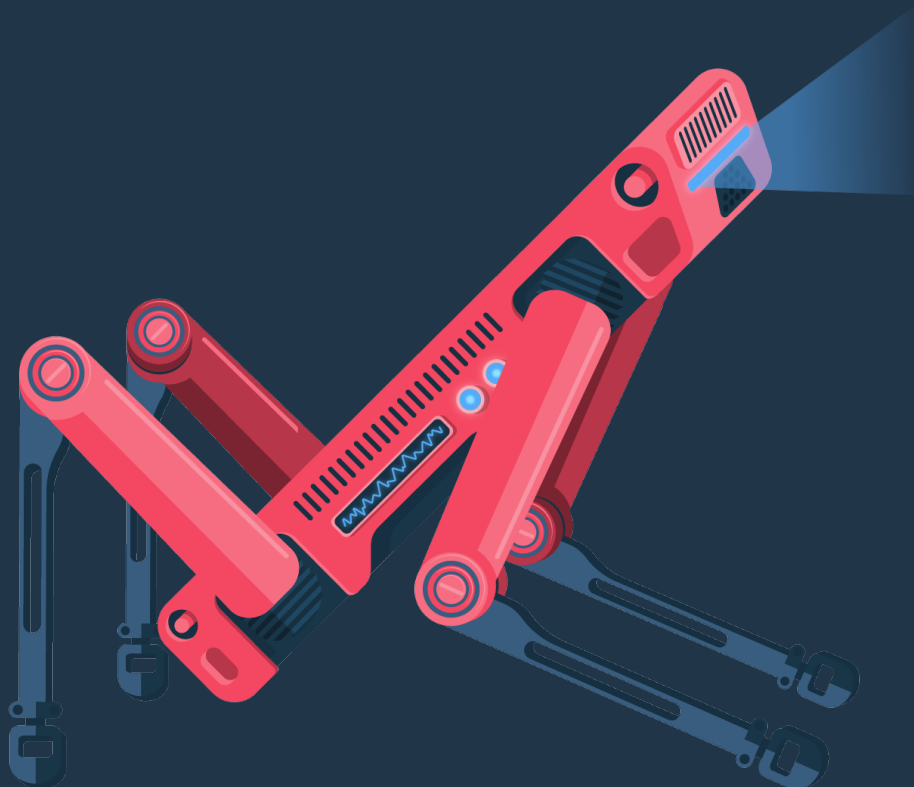
From a specific location

If you want to choose a new specific location, you need to choose a new sticky port.

You can choose it in the Endpoint generator tab, under the Session type section.

Main countries have up to 10,000 ports with sticky IPs. For example, `it.smartproxy.com: 25762` will give the same Italian IP address for up to 30 minutes. Please note that this endpoint has 10,000 sticky ports, from 20001 to 29999.

```
curl -U user:pass-x it.smartproxy.com: 20001 - 29999 https://ipinfo.io
```



Sending APIs requests

SERP Scraping API

With the SERP Scraping API you can scrape all popular search engines like Google, Baidu, Bing and Yandex.

In the Authentication method tab on the dashboard, enter your username:password credentials, and choose which search engine you want to scrape. Then click on the Generate button to see an example of the code for you to use.

Note that in the dashboard, there is only cURL code example, so go to [the help docs](#) to check other programming language examples (such as Python, JavaScript, etc.)

eCommerce Scraping API

With the eCommerce Scraping API you can gather data from eCommerce websites like AliExpress, Idealo, and Wayfair.

In the Authentication method tab on the dashboard, enter your username:password credentials, and choose which eCommerce site you want to scrape. Then click on the Generate button to see an example of the code for you to use.

Note that in the dashboard, there is only cURL code example, so go to [the help docs](#) to check other programming language examples (such as Python, JavaScript, etc.)

Web Scraping API

With the Web Scraping API you can collect various data from almost any website.

In the Authentication method tab on the dashboard, enter your username:password credentials, and click on the Universal button. Then click on the Generate button to see an example of the code for you to use.

Note that in the dashboard, there is only cURL code example, so go to [the help docs](#) to check other programming language examples (such as Python, JavaScript, etc.)

No-Code Scraper

No-Code allows you to collect data without writing a single line of code. In the Collection Management tab on the dashboard, click a Create new button to create a new collection. Now you can choose between two pre-made collections or create your own, by choosing the Universal button. If you choose the Universal collection, you'll need to install the No-Code Scraper extension. You can do that by downloading on the [Chrome Web Store](#).

Check [the help docs](#) for more info.

Monthly subscriptions and payment options

Our residential and datacenter proxies' pricing model is based on traffic usage. This means that you can use an unlimited number of connections, threads, and countries! In case of SERP, Web, eCommerce Scraping APIs and No-Code Scraper, you will be charged for requests, and dedicated datacenter proxies' plans are based on the number of IPs you buy.

When you purchase a Smartproxy plan, you create an auto-renewable monthly subscription. Payments are made automatically every month at the beginning of every billing cycle. The billing cycle begins on the day of your first payment.

You can change your plan by upgrading/downgrading/renewing it at any time. As each of our plans creates an auto-renewable monthly subscription, you have to opt-out of your ongoing monthly subscription before the next billing cycle starts.

A 3-day free trial with 3k requests is available for one Scraping API product. So if you choose to test, for example, SERP Scraping API, you won't be able to try eCommerce Scraping API, Web Scraping API, and No-Code Scraper.

With residential proxies, you can use the Pay As You Go option. This payment system allows you to use residential IPs without committing to a subscription plan. So top up your [Smart Wallet](#), turn Pay As You Go feature on, and you'll be automatically charged \$12.5 for 1 GB. After you use 90% of 1 GB, you'll be automatically charged for the next GB. When you don't need this feature Pay As You Go, simply turn it off. Note that you can't have a subscription plan and Pay As You Go simultaneously.

With shared datacenter proxies, we offer two pricing models: Pay per IP allows you to pay for a specific number of datacenter IPs and GBs in chosen locations; Pay per GB lets you get unlimited IPs while paying for the traffic (bandwidth) only.

Free tools



X Browser

Juggling multiple profiles has never been easier. Get unique fingerprints and use as many browsers as you need, risk-free!



Chrome Browser extension

Easy-to-use, damn powerful. A proxy wonderland in your browser, accessible in 2 clicks. Free of charge.



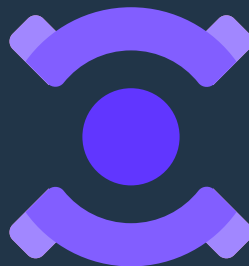
Firefox Browser Add-on

Easy to set up, even easier to use. The virtual world at your fingertips in 2 clicks. Free of charge.



Proxy Address Generator

Tired of proxy lists? Generate instant user:pass lists for your sticky sessions and export proxies in seconds.

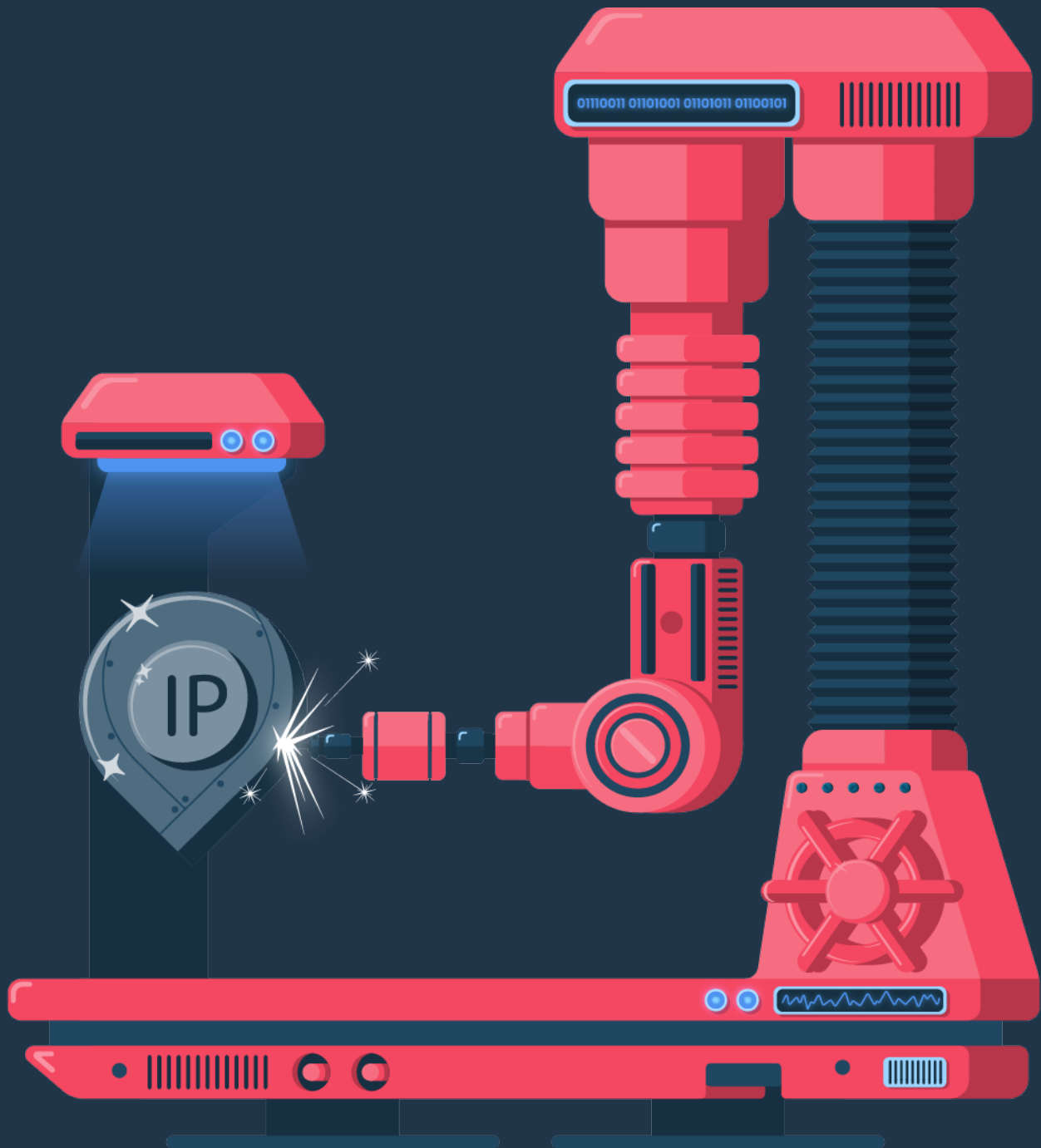


No-Code Scraper extension

No coding skills? No problem! Harvest and sort any data you need in a smart and easy way. Yup, free of charge.

Help & Documentation

Need more information? Check out our help docs for setup guides for browsers, operating systems, smartphones, and much more. Also, find some useful code samples as well as dope tips & tricks.



Have any questions?

Write us an email sales@smartproxy.com